



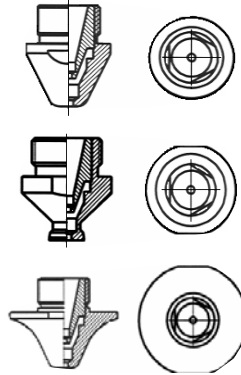
Toll Free: 866-855-4899 Fax: 828-697-2510 www.robolase.com

Amada[®] OEM Quality LASER Parts and Optics

Nozzle HS95 Chrome / Copper



- 1664545U 2.0mm
- 71341610 2.0 **NewPrices!**
- 1664545U 1.0mm
- 1664545U 1.5mm
- 1664544U 3.0mm
- 71360142 3.0mm

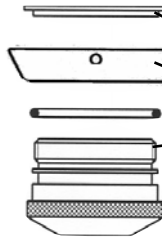


Gemini nozzle with insert

- 7134162- 1.0, 1.2, 1.4, 1.5, 2.0, 2.5, 3.0, 3.8, 4.0mm
 - 71341682- 1.0, 1.2, 1.4, 1.5, 2.0, 2.5, 3.0, 3.8, 4.0mm
 - 1572361 - 1.2, 1.4, 2.0, 3.0, 4.0mm
- Also available in same style no inserts.

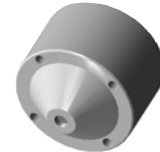


- 62094006 2.0mm
- 1507610 1.5mm
- 1507611 2.0mm
- 71102007 3.0mm



Gemini Holder

- 71366437
- 71366438
- 71366452



71101905



6506892



- 62094005 2.0mm
- 71102006



71101901

71341614 Spacer Rings



21mm

62094006 - Ring



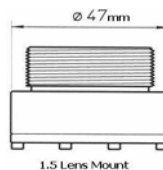
16mm

Amada OEM Quality Focus Lenses:

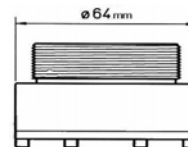
- 81140186 2.0"--.310"-7.5"FL
- 81140186A 2.0"--.380"-7.5"FL
- 81140306 1.5"--.300"-5.0"FL
- 81140307 2.0"--.310"-5.0"FL
- 81140400 1.5"--.315"-7.5"FL

These are NEW, OEM quality lenses with standard absorption rates
Quality Materials, Quality Workmanship, Quality Products

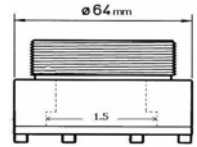
Lens Mounts



1.5 Lens Mount



2.0 Lens Mount



2.0 Lens Mount with 1.5 lens (Nickel Plated)